

ALFORD

Neighbourhood Plan

With reference to the following legislation:

- The Neighbourhood Planning (Referendums) Regulations 2012
- The Neighbourhood Planning (Referendums) (Amendment) Regulations 2014.
- The Neighbourhood Planning (Referendums) (Amendment) Regulations 2013.
- Amendments introduced by the Localism Act 2011 to the 1990 Town and Country Planning Act (as amended) and the 2004 Planning and Compulsory Purchase Act.

This document contains the Information Statement prepared by the Council with regard to the referendum and includes the general information about town and country planning and (neighbourhood planning).

About this booklet

There will be a referendum on a neighbourhood plan for your area. It is to be held on **Thursday 23 May 2019**. In this booklet you can find out about:

- The referendum and how you can take part
- The neighbourhood area
- The neighbourhood plan
- The development plan (of which neighbourhood plans are a part)

Referendum on the Neighbourhood Plan

A referendum asks you to vote yes or no to a question. For this referendum you will receive a ballot paper with this question:

“Do you want East Lindsey District Council to use the Neighbourhood Plan for Alford to help it decide planning applications in the neighbourhood area?”

How do I vote in the referendum?

You show your choice by putting a cross (X) in the ‘Yes’ or ‘No’ box on your ballot paper. Put a cross in only **one** box or your vote will not be counted.

If more people vote ‘yes’ than ‘no’ in this referendum, then East Lindsey District Council will use the Neighbourhood Plan to help it decide planning applications in the Alford Parish area.

The Neighbourhood Plan will then become part of the adopted East Lindsey District Council Local Plan.

If more people vote ‘no’ than ‘yes’, then planning applications will be decided without using the Neighbourhood Plan as part of the Development Plan for the local area.

What is Neighbourhood Planning?

Neighbourhood planning aims to help local communities play a direct role in planning the areas in which they live and work.

A community can prepare a neighbourhood plan. This plan can show how the community wants land to be used and developed in its area.

What is a neighbourhood area?

A neighbourhood area can cover single streets or large urban or rural areas.

The boundaries of a neighbourhood area are put forward by:

- Town or parish councils
- A neighbourhood forum (a group of at least 21 people in areas without town or parish councils)

Who can prepare a Neighbourhood Plan?

Neighbourhood plans are prepared by town or parish councils, or neighbourhood forums.

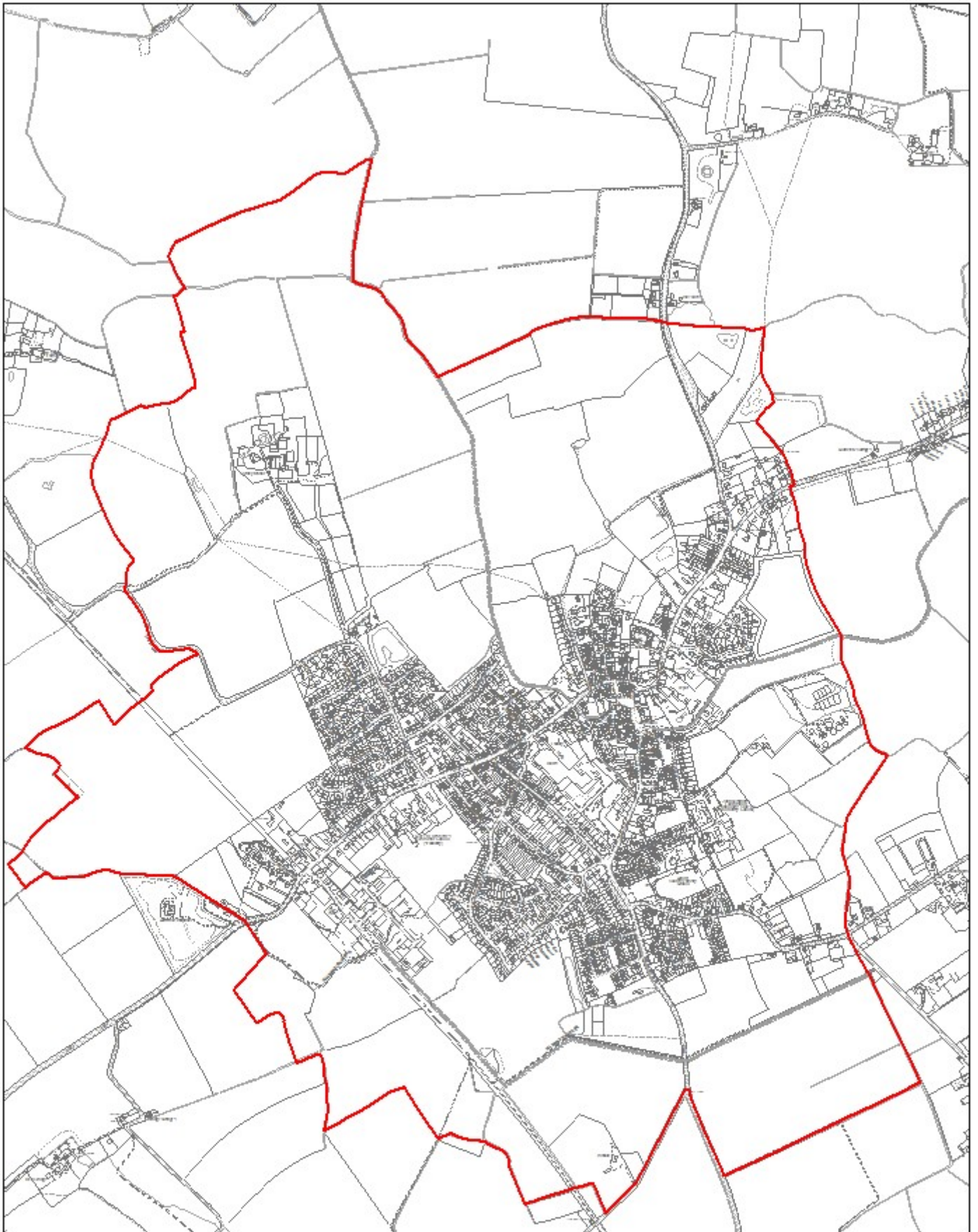
What is a Development Plan?

In England, planning applications are determined by local planning authorities in accordance with the development plan.

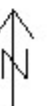
A development plan is a set of documents that set out the policies for the development and use of land across the entire local authority area.

Neighbourhood Planning in the Parish of Alford

The Referendum area is identified on the map below as the parish area of Alford Parish and is identical to the area which has been designated as the Alford Neighbourhood Plan area.



© Crown copyright and database rights (2018) OS (East Lindsey District Council licence number 100019809). You are permitted to use this data solely to enable you to respond to, or interact with, the organisation that provided you with the data. You are not permitted to copy, sub-licence, distribute or sell any of this data to third parties in any form.



Referendum expenses

Expenses can be incurred by an individual or body during the period of the referendum for referendum purposes.

The referendum expenses limit that will apply in relation to the referendum is £2525.37. The number of persons entitled to vote in the Referendum by reference to which the limit has been calculated is 2769.

Specified documents

A copy of the specified documents, that is the documents listed below, may be viewed on the neighbourhood planning page of the council's website at <https://www.e-lindsey.gov.uk/article/6130/Alford-Neighbourhood-Development-Plan>

Paper copies of the specified documents are also available to view at:

East Lindsey District Council
Tedder Hall
Manby Park Louth LN11 8UP

During normal office hours : Monday – Friday 9:00am – 5.00pm

The specified documents are:

- The Alford Parish Neighbourhood Development Plan;
- Report of the independent examiner ;
- Summary of the representations submitted to the independent examiner;
- Statement by the local planning authority that the draft plan meets the basic conditions and complies with the relevant legislation;
- This document which contains the Information Statement prepared by the Council with regard to the referendum and includes the general information about town and country planning and (neighbourhood planning).

Can I vote?

You can vote in the referendum if you live in the parish of Alford and:

- You are registered to vote in local council elections, and

- You are 18 years of age or over on Thursday 23 May 2019.

You have to be registered to vote by Tuesday 7 May 2019 to vote in the referendum. You can check if you are registered to vote by calling Customer Services on 01507 601111.

The referendum will be conducted in accordance with procedures which are similar to those used at local government elections.

Ways of voting

There are three ways of voting:

In person on: Thursday 23 May 2019.

Most people vote in person at their local polling station. It is easy and a member of staff will always help if you are not sure what to do.

- In the Alford Parish area the polling station will be:
- Corn Exchange, Market Place, Alford
- You will receive a poll card to advise you about the polling station.
- If you do not receive your poll card, you can contact Customer Services on 01507 601111.
- Polling stations are open from 7am to 10pm.
- If you are not in the queue at the polling station by 10pm you won't be able to vote, so make sure you arrive in plenty of time.

By post:

- To vote by post, fill in an application form and send it to Elections Office, Room 3, East Lindsey District Council, Tedder Hall, Manby Park, Louth LN11 8UP to arrive by **5.00pm on Wednesday 8 May 2019**.
- Ballot papers can be sent overseas, but you need to think about whether you will have time to receive and return your ballot papers by Thursday 23 May 2019.
- You should receive your postal vote about a week before polling day. If it doesn't arrive in time, you can get a replacement up to Thursday 23 May 2019.

By proxy:

- If you can't go to the polling station and don't wish to vote by post, you may be able to vote by proxy. This means allowing somebody you trust to vote on your behalf.
- To vote by proxy, fill in an application form and send it to Elections Office, Room 3, East Lindsey District Council, Tedder Hall, Manby Park, Louth LN11 8UP to arrive by **5.00pm Wednesday 15 May 2019**.
- When you apply for a proxy vote you must say why you cannot vote in person.
- Anyone can be your proxy as long as they are eligible to vote and are willing to vote on your behalf. You will have to tell them how you want to vote.

Postal and proxy vote application forms are available from Elections Office, Room 3, East Lindsey District Council, Tedder Hall, Manby Park, Louth LN11 8UP or for downloading at:

www.aboutmyvote.co.uk/how-do-i-vote

Am I registered to vote?

- If you're not registered, you won't be able to vote.
- Most people register to vote using the form that local councils send to each household each year.
- If you are not on the electoral register, you will need to complete a voter registration form and send it to Elections Office, Room 3, East Lindsey District Council, Tedder Hall, Manby Park, Louth LN11 8UP to arrive no later than **Tuesday 7 May 2019**.
- Registration forms are available from Customer Services on 01507 601111 or applications can be submitted online at:
www.gov.uk/register-to-vote

How to find out more

- Further general information on neighbourhood planning is available on the following websites:
 - <http://www.e-lindsey.gov.uk/neighbourhoodplanning>
 - <https://www.gov.uk/guidance/neighbourhood-planning--2>

- <http://www.rtpi.org.uk/planning-aid/neighbourhood-planning/>
 - <https://neighbourhoodplanning.org/>
 - <http://mycommunity.org.uk/programme/neighbourhood-planning/>
 - <https://locality.org.uk/services-tools/neighbourhood-planning/>
- You can find the specified documents and a copy of this information statement and the decision statement , on the council's website at: <https://www.e-lindsey.gov.uk/article/6130/Alford-Neighbourhood-Development-Plan>
 - Information about the Neighbourhood Plan is also available on the Alford Neighbourhood Development Plan website at: <http://parishes.lincolnshire.gov.uk/Alford/section.asp?catId=36653>
 - For queries relating to the neighbourhood plan please contact Senior Planning Policy Officer on 01507 613143 or by email at kay.turton@e-lindsey.gov.uk