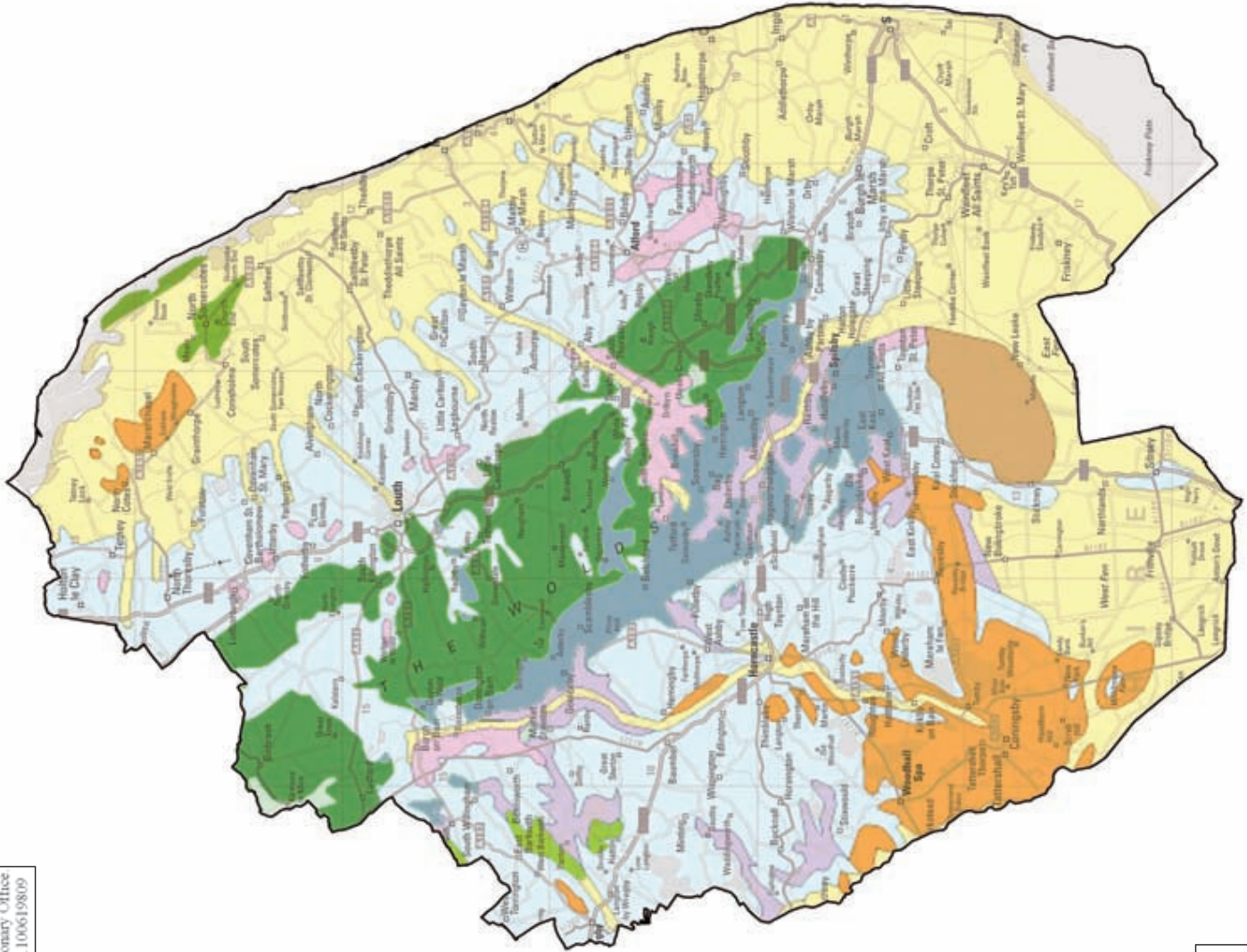


Reproduced from the original Ordnance Survey Map.  
With the permission of Her Majesty's Stationary Office  
Crown Copyright. Licence no. 1006198109



Data Source - British Geological Survey  
Digital Licence 2008/160A



**KEY**

	East Lindsey District Boundary
<b>SUPERFICIAL DEPOSITS</b>	
	Alluvium
	Blown Sand
	Glacial Sand & Gravel
	River Terrace Deposits (undifferentiated)
	Till (Boulder Clay)
	Peat
<b>BEDROCK</b>	
	Amphill Clay Kimmeridge Clay & Corfillian
	Chalk (Including Red Chalk)
	Lower Cretaceous
	Oxford Clays & Kellaway Beds

**East Lindsey Landscape Character Assessment**

**Figure 1:** Simplified Surface Geology  
**Source:** British Geological Survey

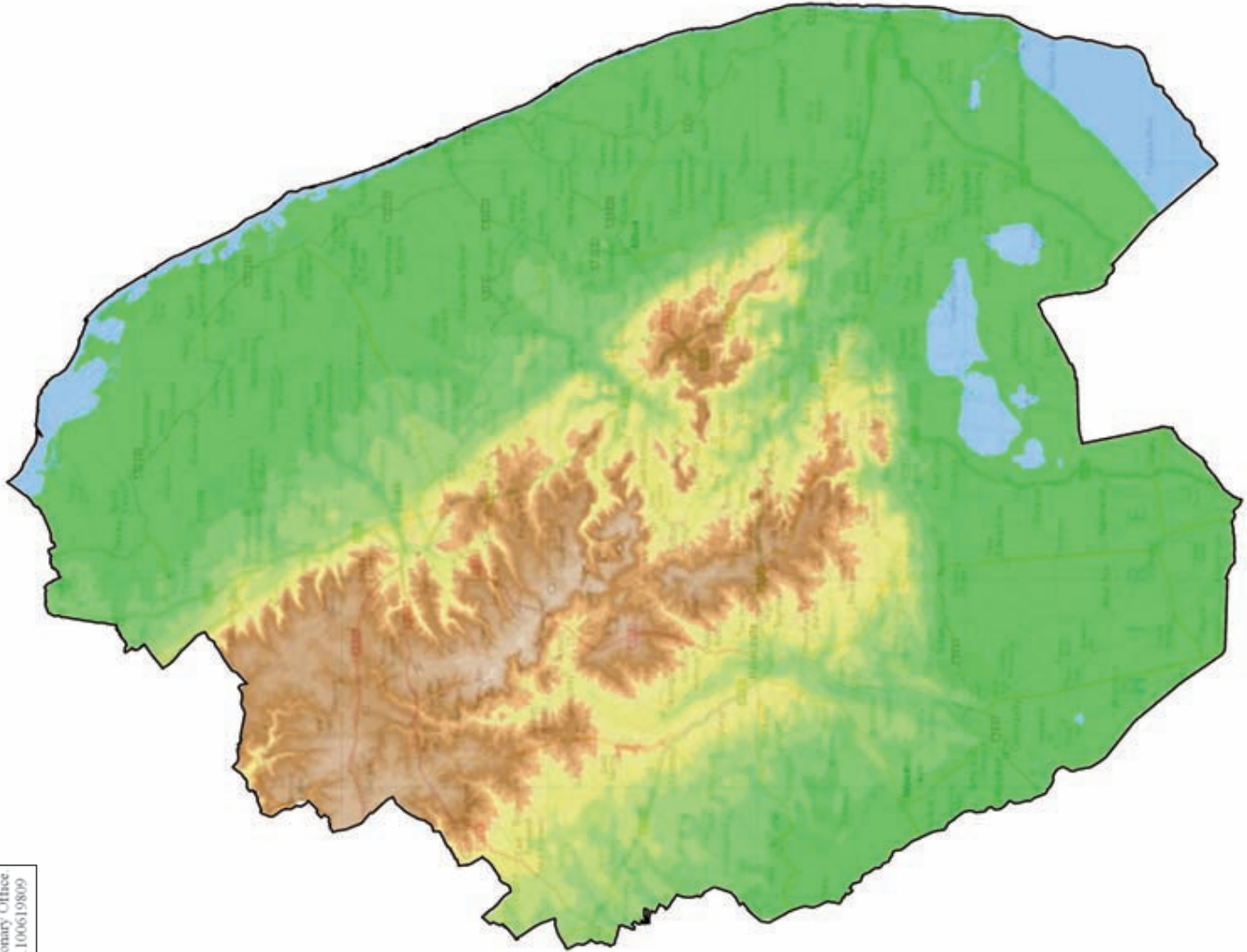
Scale 1:115 000 @ A3

23rd March 2009  
ECUS ref: MS/1846/01/rev A



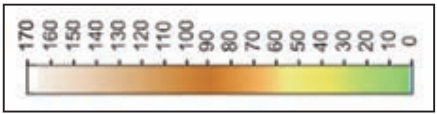
**ENVIRONMENTAL CONSULTANCY**  
Endcliffe Holt  
343 Fulwood Road  
Sheffield  
S10 3BQ  
Tel: 0114 266 9292  
Fax: 0114 266 8243  
www.ecusltd.co.uk

Reproduced from the original Ordnance Survey Map.  
With the permission of Her Majesty's Stationary Office  
Crown Copyright Licence no. 100619809



**KEY**

East Lindsey District  
Boundary



Height - M Above AOD

**East Lindsey Landscape  
Character Assessment**

Figure 2: Topography  
Source: Ordnance Survey

Scale 1:115 000 @ A3

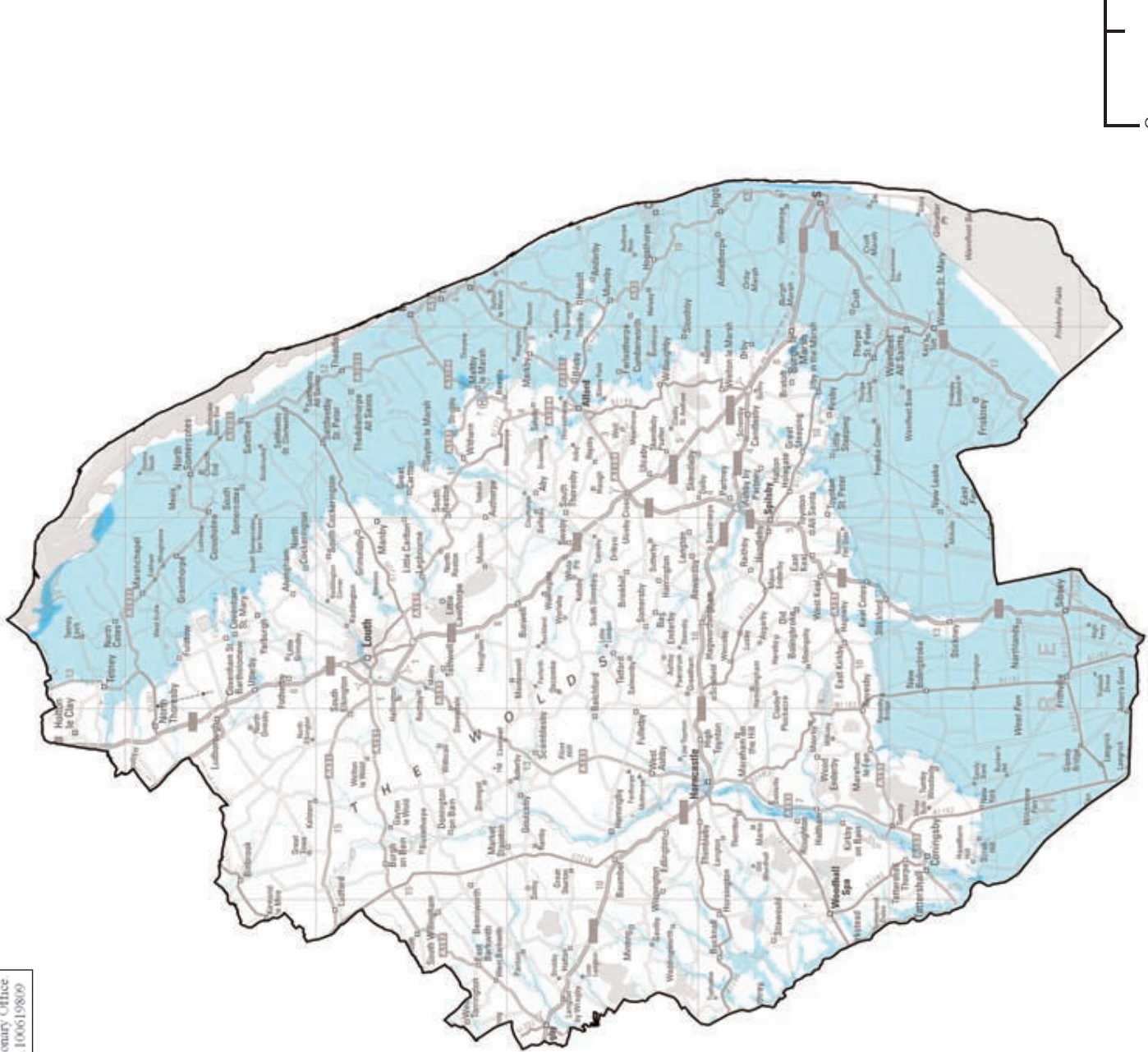
6th Nov. 2008  
ECUS ref:  
MS/1846/02






**ENVIRONMENTAL CONSULTANCY**

Endcliffe Holt  
343 Fulwood Road  
Sheffield  
S10 3BQ  
Tel: 0114 266 9292  
Fax: 0114 266 8243  
www.ecusltd.co.uk

Reproduced from the original Ordnance Survey Map  
 With the permission of Her Majesty's Stationary Office  
 Crown Copyright  
 Licence no. 1006198109



**KEY**

-  East Lindsey District Boundary
-  Flood Risk Zone 2
-  Flood Risk Zone 3

**East Lindsey Landscape Character Assessment**

**Figure 3: Flood Risk Zones**  
**Source: East Lindsey District Council**

Scale 1:115 000 @ A3

20th July 2009

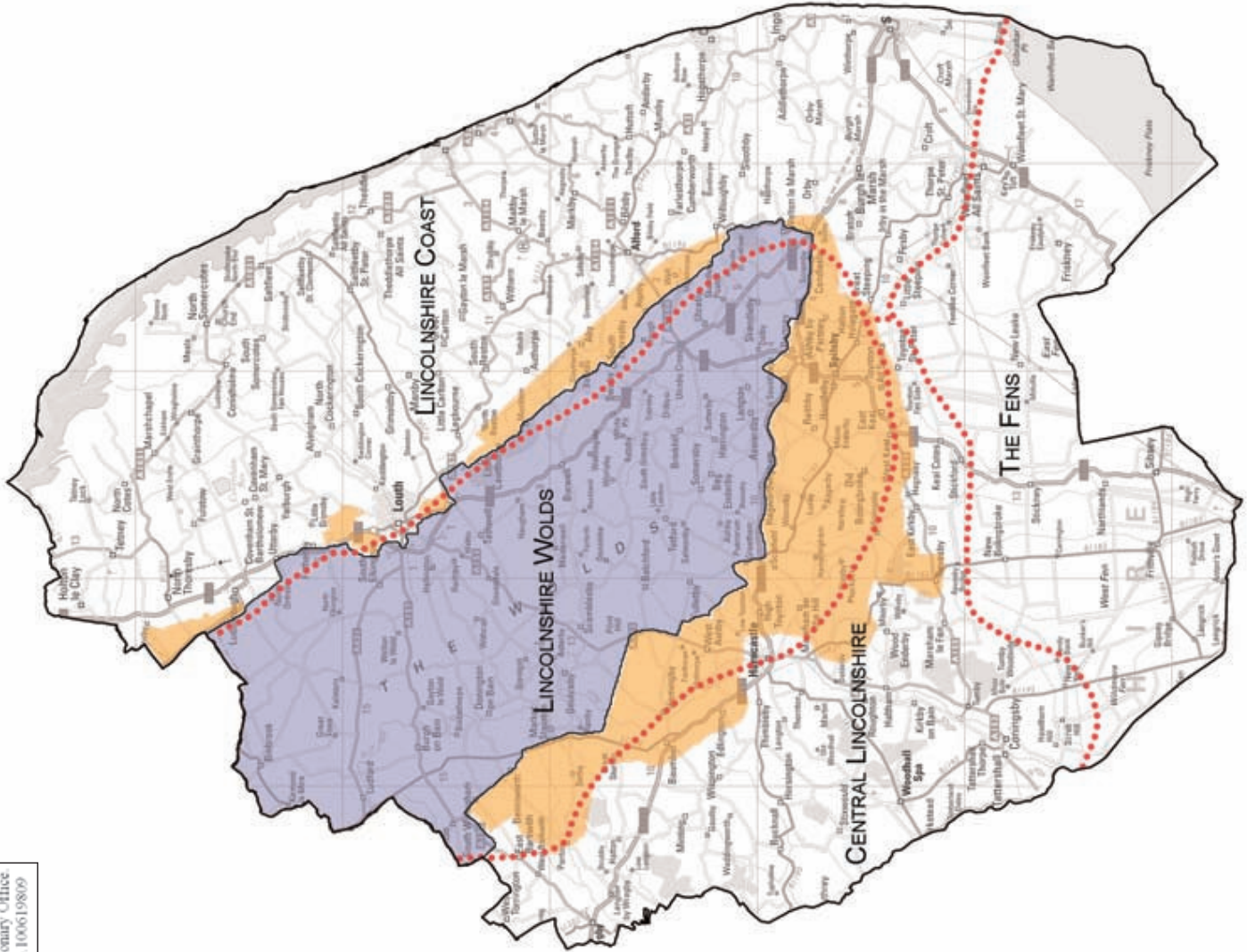
ECUS ref: MS/1846/03/revA






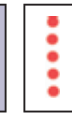
**ENVIRONMENTAL CONSULTANCY**

Endcliffe Holt  
 343 Fulwood Road  
 Sheffield  
 S10 3BQ  
 Tel: 0114 266 9292  
 Fax: 0114 266 8243  
 www.ecusltd.co.uk

Reproduced from the original Ordnance Survey Map  
 With the permission of Her Majesty's Stationary Office  
 Crown Copyright  
 Licence no. 100619809



**KEY**

-  East Lindsey District Boundary
-  Area of Great Landscape Value (AGLV)
-  Area of Outstanding Natural Beauty (AONB)
-  Joint Character Areas (JCA) Boundaries

**East Lindsey Landscape Character Assessment**

**Figure 4: Joint Character Areas & Landscape Designations**

**Source:** East Lindsey District Council and Natural England

Scale 1:115 000 @ A3

6th Nov. 2008

ECUS ref: MS/1846/04

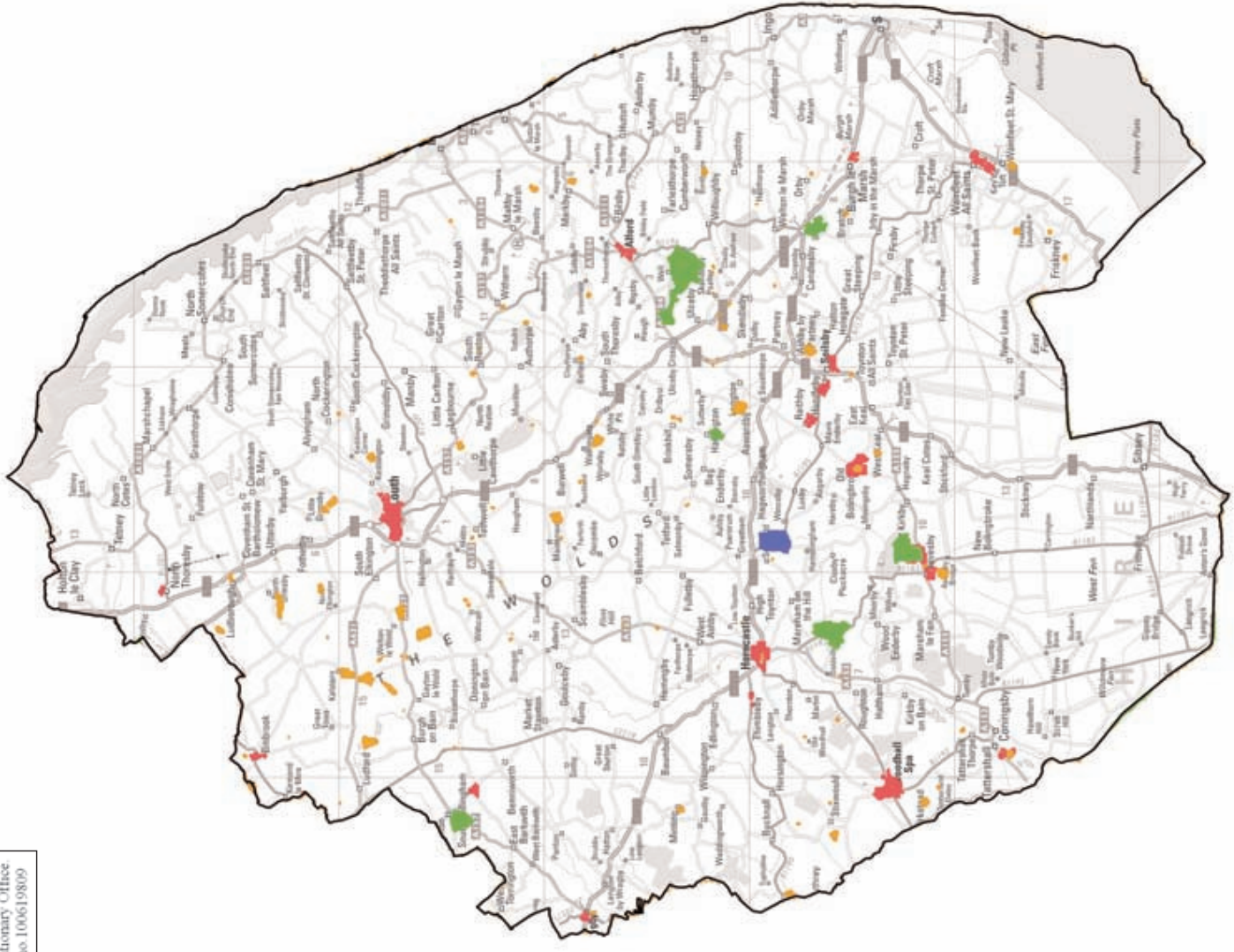


**ENVIRONMENTAL CONSULTANCY**






Endcliffe Holt  
 343 Fulwood Road  
 Sheffield  
 S10 3BQ

Tel: 0114 266 9292  
 Fax: 0114 266 8243  
 www.ecusltd.co.uk

Reproduced from the original Ordnance Survey Map  
 With the permission of Her Majesty's Stationary Office  
 Crown Copyright  
 Licence no. 100619809



**KEY**

-  East Lindsey District Boundary
-  Conservation Area
-  Scheduled Monument
-  Historic Park and Garden
-  Battlefield

**East Lindsey Landscape  
 Character Assessment**

**Figure 5: Cultural Designations**  
**Source: East Lindsey District Council**

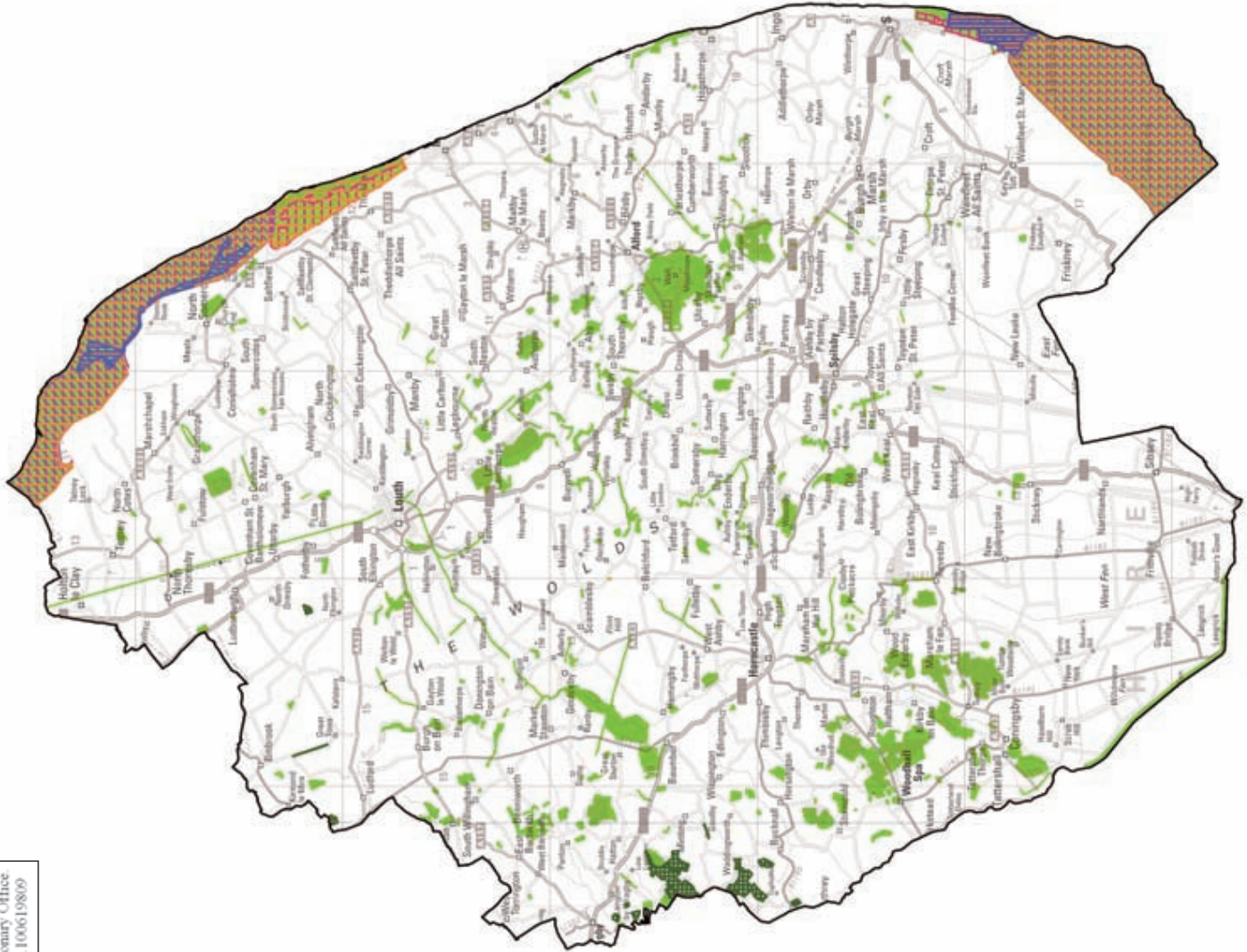
Scale 1:115 000 @ A3

24th March 2009 ECUS ref: MS1846/05/rev A


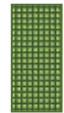







**ENVIRONMENTAL CONSULTANCY**  
 Endcliffe Holt  
 343 Fulwood Road  
 Sheffield  
 S10 3BQ  
 Tel: 0114 266 9292  
 Fax: 0114 266 8243  
 www.ecusltd.co.uk

Reproduced from the original Ordnance Survey Map  
 With the permission of Her Majesty's Stationary Office  
 Crown Copyright  
 Licence no. 100619809



**KEY**

-  East Lindsey District Boundary
-  Local Wildlife Site
-  National Nature Reserve (NNR)
-  Site of Nature Conservation Interest (SNCI) & Site of Special Scientific Interest (SSSI)
-  Special Area of Conservation (SAC)
-  Special Protection Area (SPA)
-  Ramsar Site

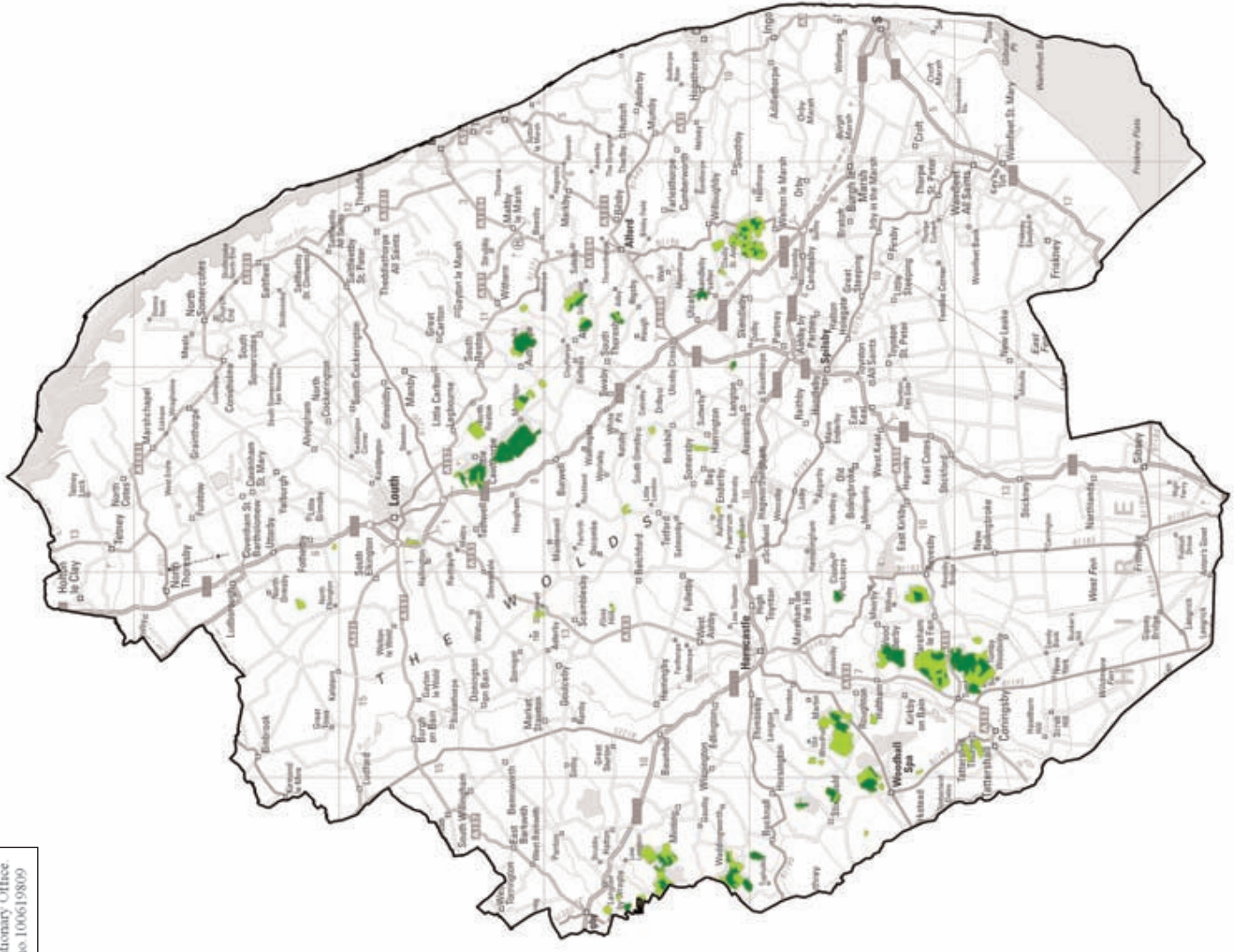
**East Lindsey Landscape Character Assessment**

**Figure 6: Nature Designations**  
**Source: East Lindsey District Council**  
 Scale 1:115 000 @ A3  
 23rd March 2009  
 ECUS ref: MS/1846/06/rev A






**ENVIRONMENTAL CONSULTANCY**  
 Endcliffe Holt  
 343 Fulwood Road  
 Sheffield  
 S10 3BQ  
 Tel: 0114 266 9292  
 Fax: 0114 266 8243  
 www.ecus.ltd.co.uk

Reproduced from the original Ordnance Survey Map  
 With the permission of Her Majesty's Stationary Office  
 Crown Copyright  
 Licence no. 100619809



**KEY**

-  East Lindsey District Boundary
-  Ancient Replanted Woodland
-  Ancient Semi-Natural Woodland

**East Lindsey Landscape Character Assessment**

**Figure 7: Ancient Woodland**  
**Source: East Lindsey District Council**

Scale 1:115 000 @ A3

6th Nov. 2008  
 ECUS ref: MS/1846/07

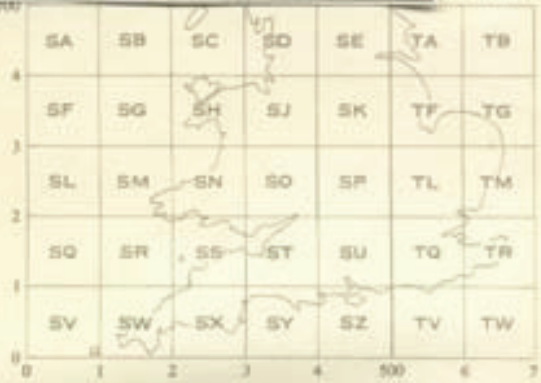


**ENVIRONMENTAL CONSULTANCY**  
 Endcliffe Holt  
 343 Fulwood Road  
 Sheffield  
 S10 3BQ  
 Tel: 0114 266 9292  
 Fax: 0114 266 8243  
 www.ecus.ltd.co.uk

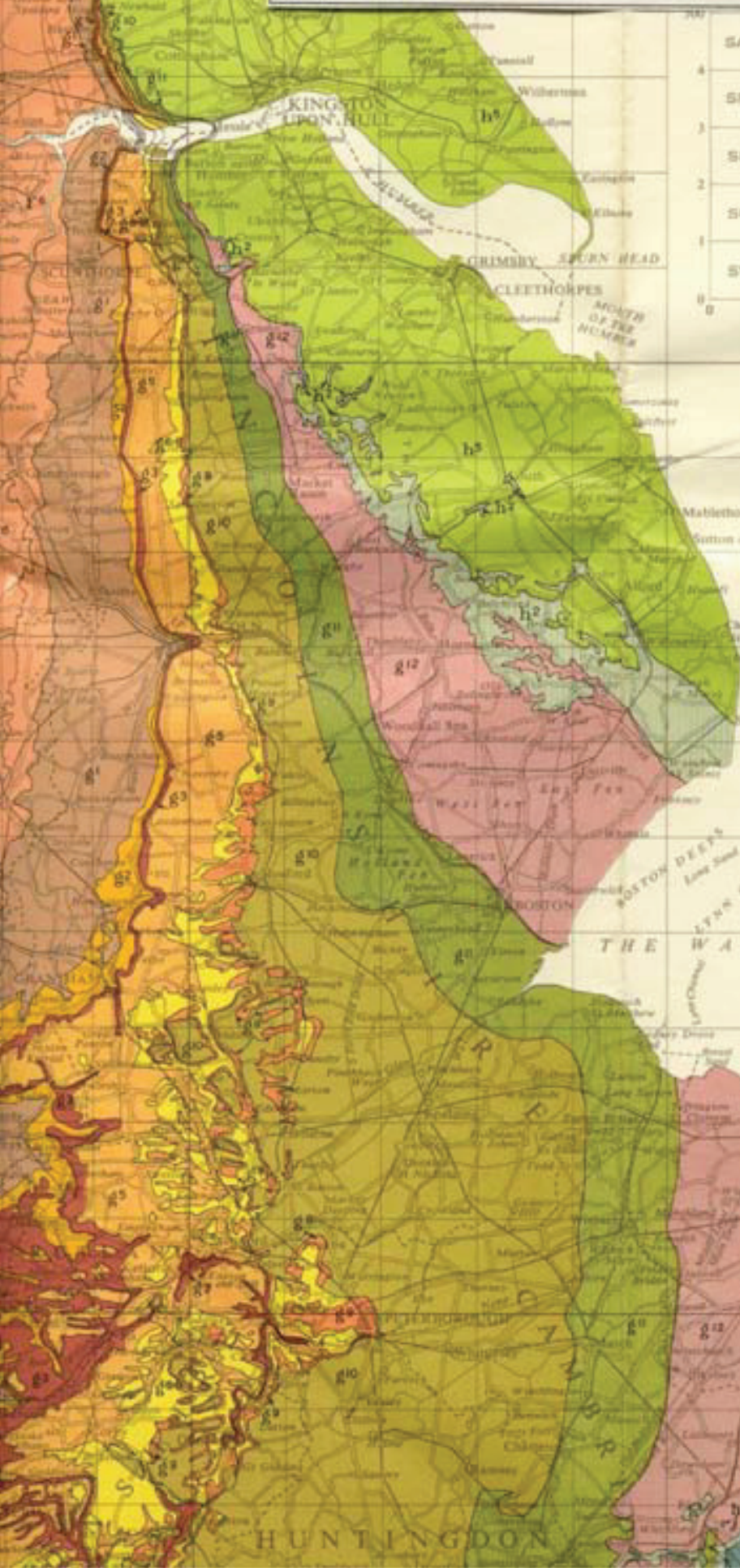
# EXTRACT from GEOLOGICAL MAP Of GREAT BRITAIN 1957



1000 YD SHEET



TO GIVE  
EXA  
See  
Take west edge of h  
in which page the  
figure printed is  
north or south map  
Estimated  
The grid letters p  
the map at each 1000  
The National Grid



Difference from Grid North

(1) True North
04°22'E NW Corner
03°23'W NE "
03°44'E SW "
02°53'W S.E. "
(2) Mag North
about 91°W, in 1955
decreasing by about 1" in four years.

Burham  
Fleets

BRANCASTER ROADS  
Boston  
THE WASH  
Lynn Deeps

HUNTINGDON

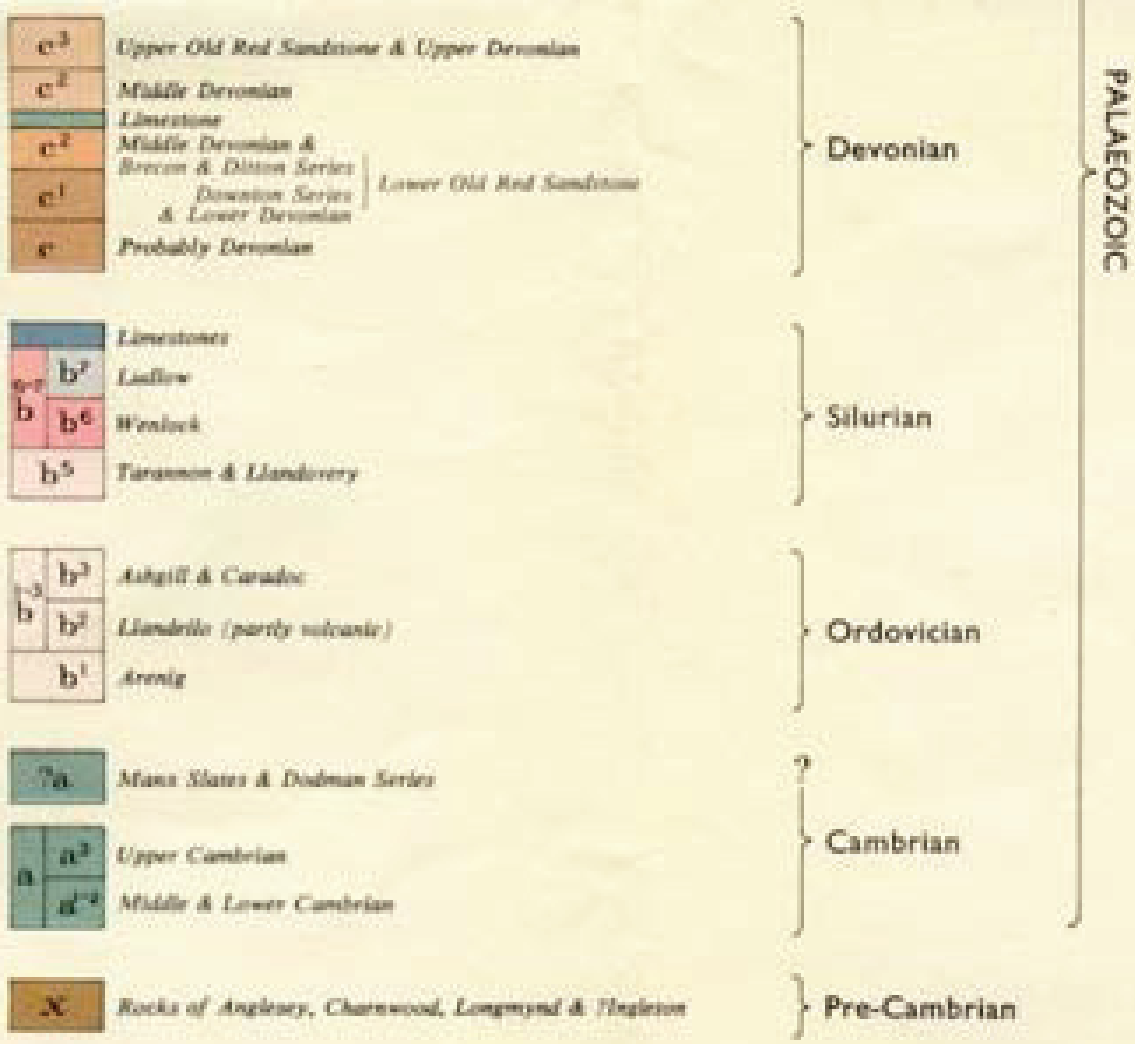


# INDEX AND EXPLANATION

## SEDIMENTARY FORMATIONS

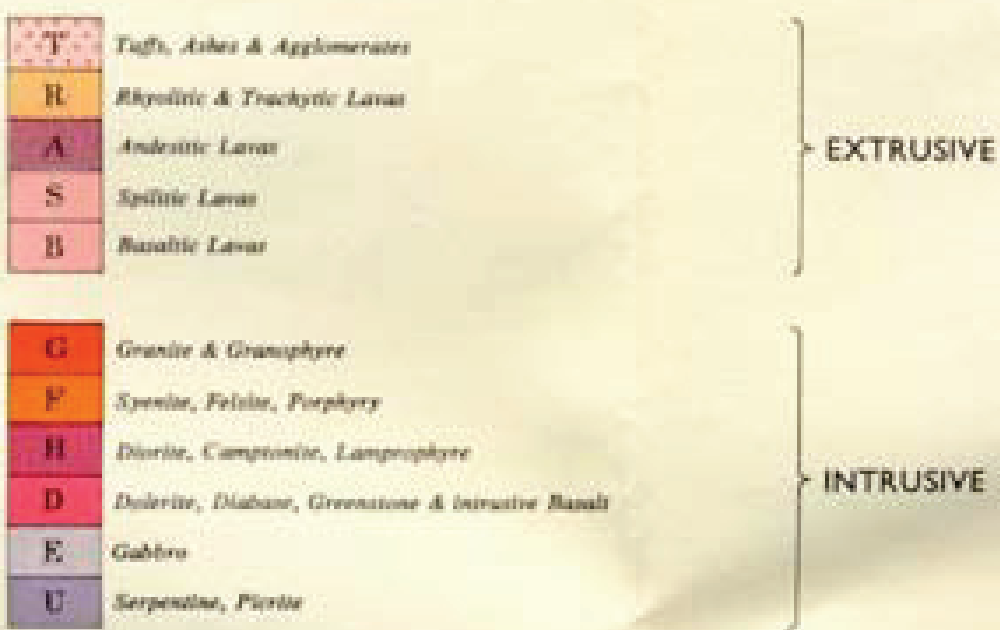
(All superficial deposits omitted)

		QUATERNARY			
<b>j</b>	Norwich & Red Crag & Chillesford Clay	Pleistocene	QUATERNARY		
<b>k'</b>	Coralline Crag				
<b>k</b>	Leam & St. Erth Beds	Pliocene	TERTIARY		
<b>j<sup>4-3</sup></b>	Hamstead, Brombridge, Osborne & Hendon Series, & Bovey Beds				
<b>j<sup>3-2</sup></b>	Barnes, Brackleyham & Bagshot Beds	Eocene	TERTIARY		
<b>j<sup>2</sup></b>	London Clay				
<b>j<sup>1-2</sup></b>	Oldhaven, Blackheath, Wootton & Reading & Thanet Beds				
<b>h<sup>5</sup></b>	Chalk (including Red Chalk)	Cretaceous	MESOZOIC		
<b>h<sup>3-4</sup></b>	Upper Greensand & Gault				
<b>h<sup>2</sup></b>	Lower Greensand & Spenton Clay				
<b>h<sup>1</sup></b>	Woolf Clay				
<b>h</b>	Hastings Beds				
<b>g<sup>14</sup></b>	Farbeck Beds			Jurassic	MESOZOIC
<b>g<sup>13</sup></b>	Portland Beds				
<b>g<sup>12</sup></b>	Kimmeridge Clay	Upper			
<b>g<sup>11</sup></b>	Corallian	Middle			
<b>g<sup>10</sup></b>	Oxford Clay with Kellaways Beds				
<b>g<sup>9</sup></b>	Cornbrash				
<b>g<sup>8-6</sup></b>	Great Oolite Series	Lower			
<b>g<sup>5</sup></b>	Inferior Oolite Series				
<b>g<sup>3-4</sup></b>	Upper Lias	Lower			
<b>g<sup>2</sup></b>	Middle Lias (Marlstone)				
<b>g<sup>1</sup></b>	Lower Lias				
<b>f<sup>6</sup></b>	Kreper Marl (with Rharric & Dolomitic Conglomerate)	Triassic	MESOZOIC		
<b>f<sup>4-5</sup></b>	Kreper Sandstone				
<b>f<sup>1-3</sup></b>	Bunter Sandstone, Pebble Beds & basal breccias				
<b>e</b>	Sandstones, marls and breccias	Permian	MESOZOIC		
<b>e<sup>5</sup></b>	Upper Permian Marl				
<b>e<sup>4</sup></b>	Magnesian Limestone (Upper)				
<b>e<sup>2</sup></b>	Middle Permian Marl				
<b>e<sup>1</sup></b>	Magnesian Limestone (Lower) & Basal Sand				
<b>d<sup>6</sup></b>	Barnes Upper Coal Measures & Pennant Series	Carboniferous	MESOZOIC		
<b>d<sup>5</sup></b>	Productive Coal Measures				
<b>d<sup>4</sup></b>	Milstone Grit & Calm Measures				
<b>d<sup>2</sup></b>	Carboniferous Limestone Series Basement Conglomerate				



## IGNEOUS ROCKS

Age, where known, indicated by formation letter, e.g.  
Ge = Permian Granite



## Metamorphic

