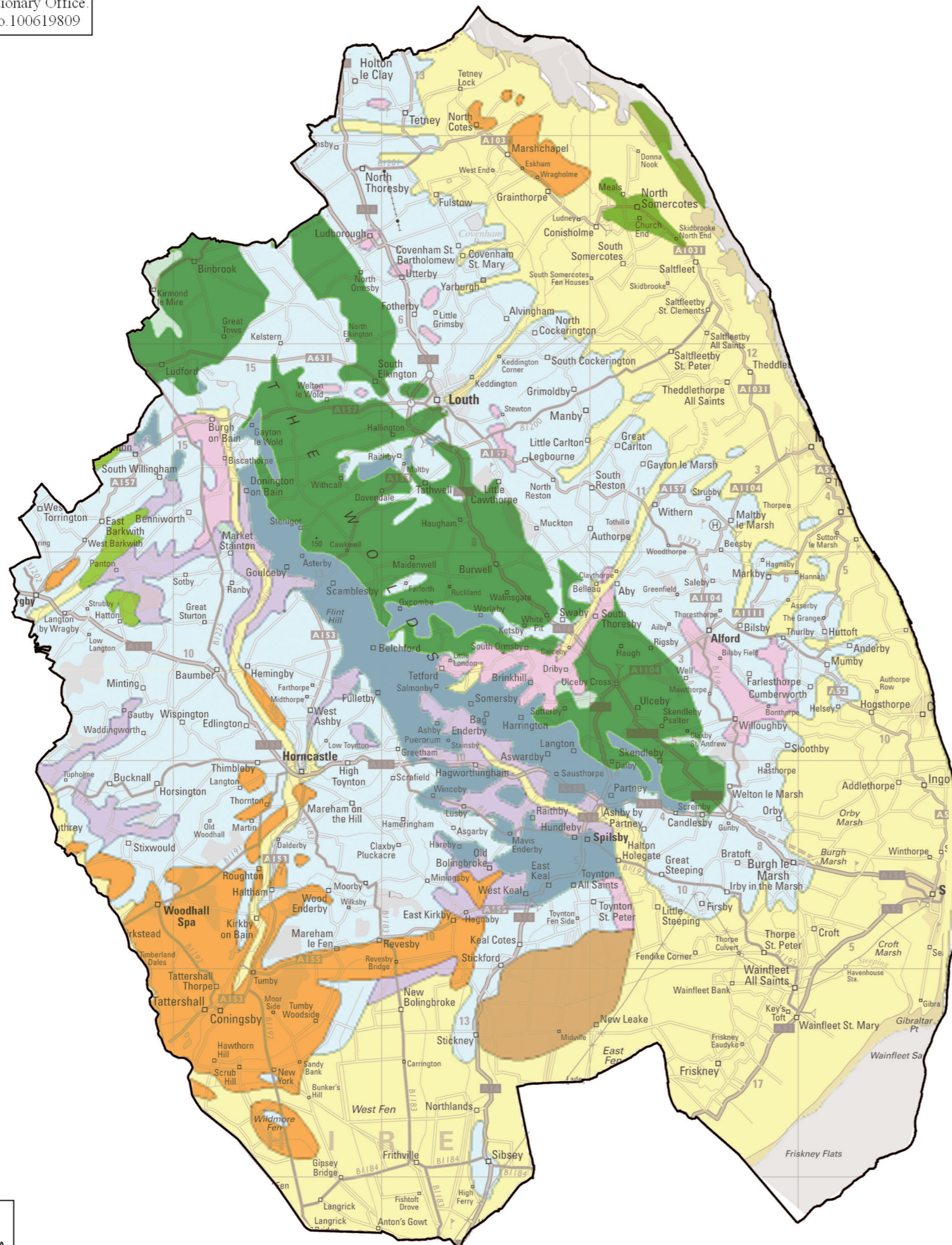


Reproduced from the original Ordnance Survey Map.
 With the permission of Her Majesty's Stationary Office.
 Crown Copyright. Licence no. 100619809



KEY

- East Lindsey District Boundary
- SUPERFICIAL DEPOSITS**
- Alluvium
- Blown Sand
- Glacial Sand & Gravel
- River Terrace Deposits (undifferentiated)
- Till (Boulder Clay)
- Peat
- BEDROCK**
- Amphill Clay Kimmeridge Clay & Corillian
- Chalk (Including Red Chalk)
- Lower Cretaceous
- Oxford Clays & Kellaway Beds

East Lindsey Landscape Character Assessment

Figure 1: Simplified Surface Geology
 Source: British Geological Survey

Scale 1:115 000 @ A3

23rd March 2009

ECUS ref:
 MS/1846/01/rev A



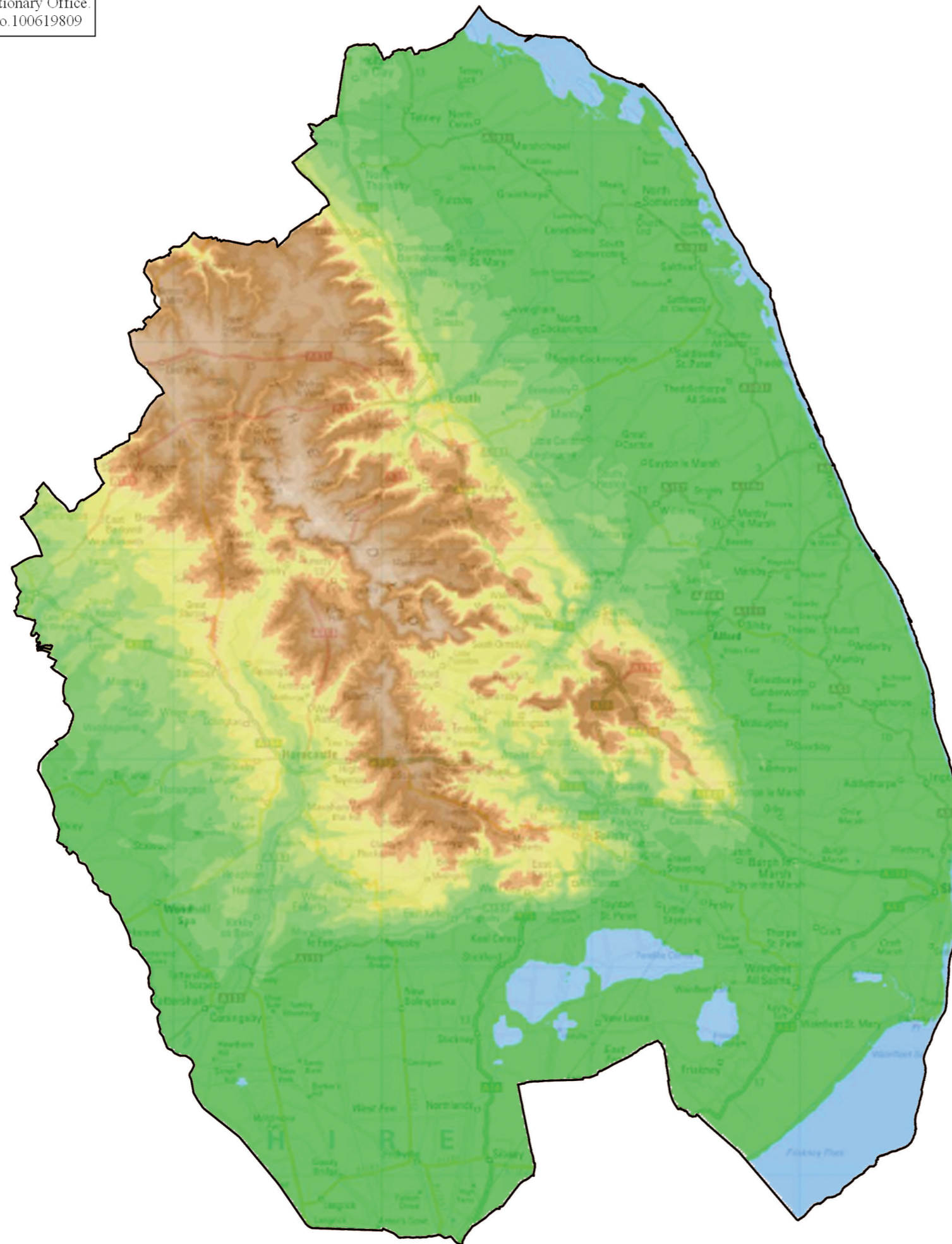
ENVIRONMENTAL CONSULTANCY

Endcliffe Holt
 343 Fulwood Road
 Sheffield
 S10 3BQ
 Tel: 0114 266 9292
 Fax: 0114 266 8243
 www.ecusltd.co.uk


Data Source - British Geological Survey
 Digital Licence 2008/160A

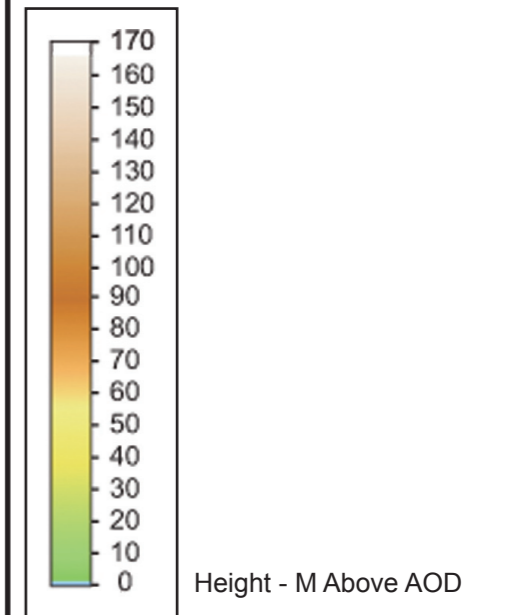


Reproduced from the original Ordnance Survey Map.
 With the permission of Her Majesty's Stationary Office.
 Crown Copyright Licence no.100619809



KEY

 East Lindsey District Boundary



East Lindsey Landscape Character Assessment

Figure 2: Topography
Source: Ordnance Survey

Scale 1:115 000 @ A3

6th Nov. 2008

ECUS ref:
MS/1846/02

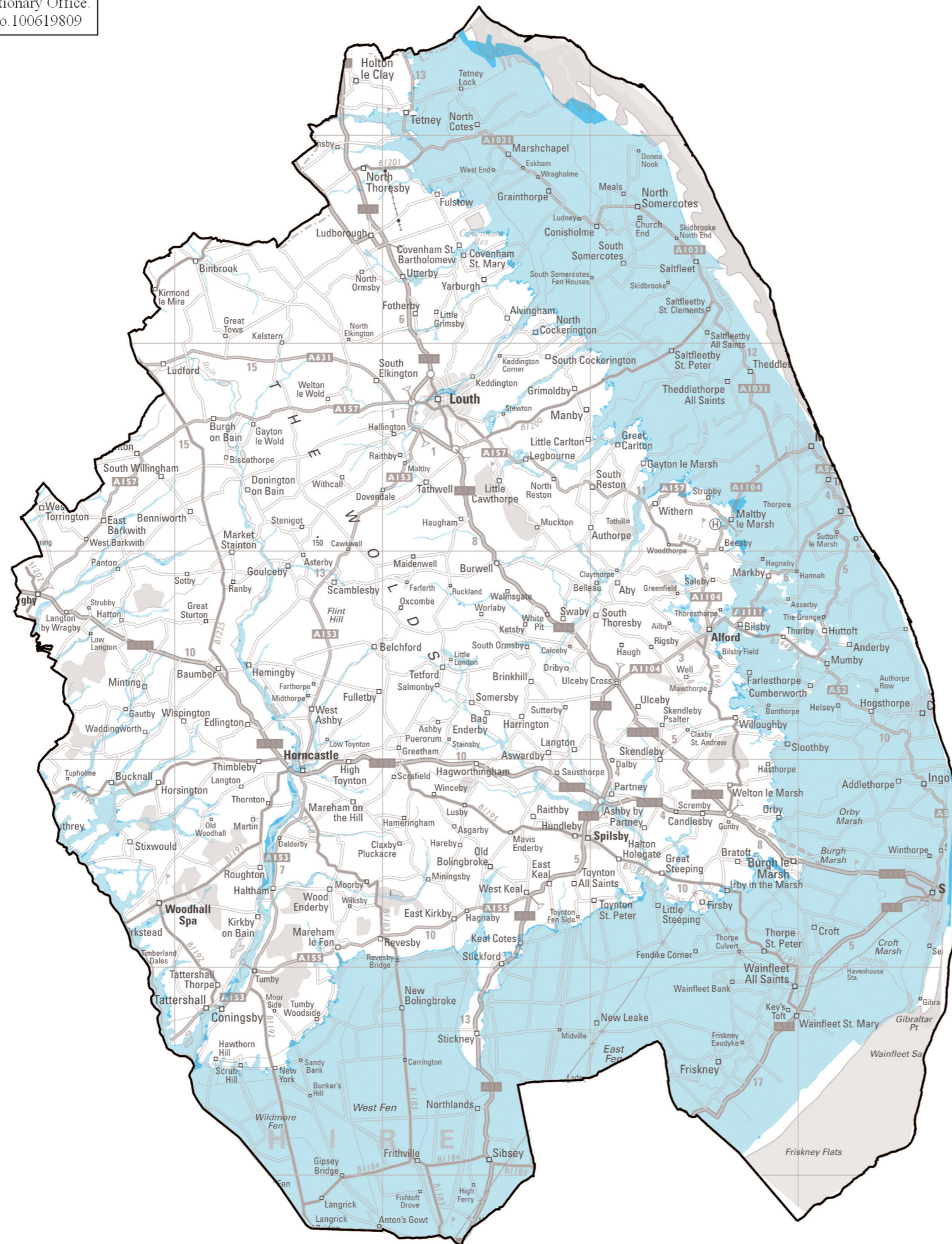


ENVIRONMENTAL CONSULTANCY




Endcliffe Holt
 343 Fulwood Road
 Sheffield
 S10 3BQ
 Tel: 0114 266 9292
 Fax: 0114 266 8243
 www.ecusltd.co.uk



Reproduced from the original Ordnance Survey Map.
 With the permission of Her Majesty's Stationary Office.
 Crown Copyright. Licence no. 100619809



KEY

-  East Lindsey District Boundary
-  Flood Risk Zone 2
-  Flood Risk Zone 3

East Lindsey Landscape Character Assessment

Figure 3: Flood Risk Zones
 Source: East Lindsey District Council

Scale 1:115 000 @ A3

20th July 2009

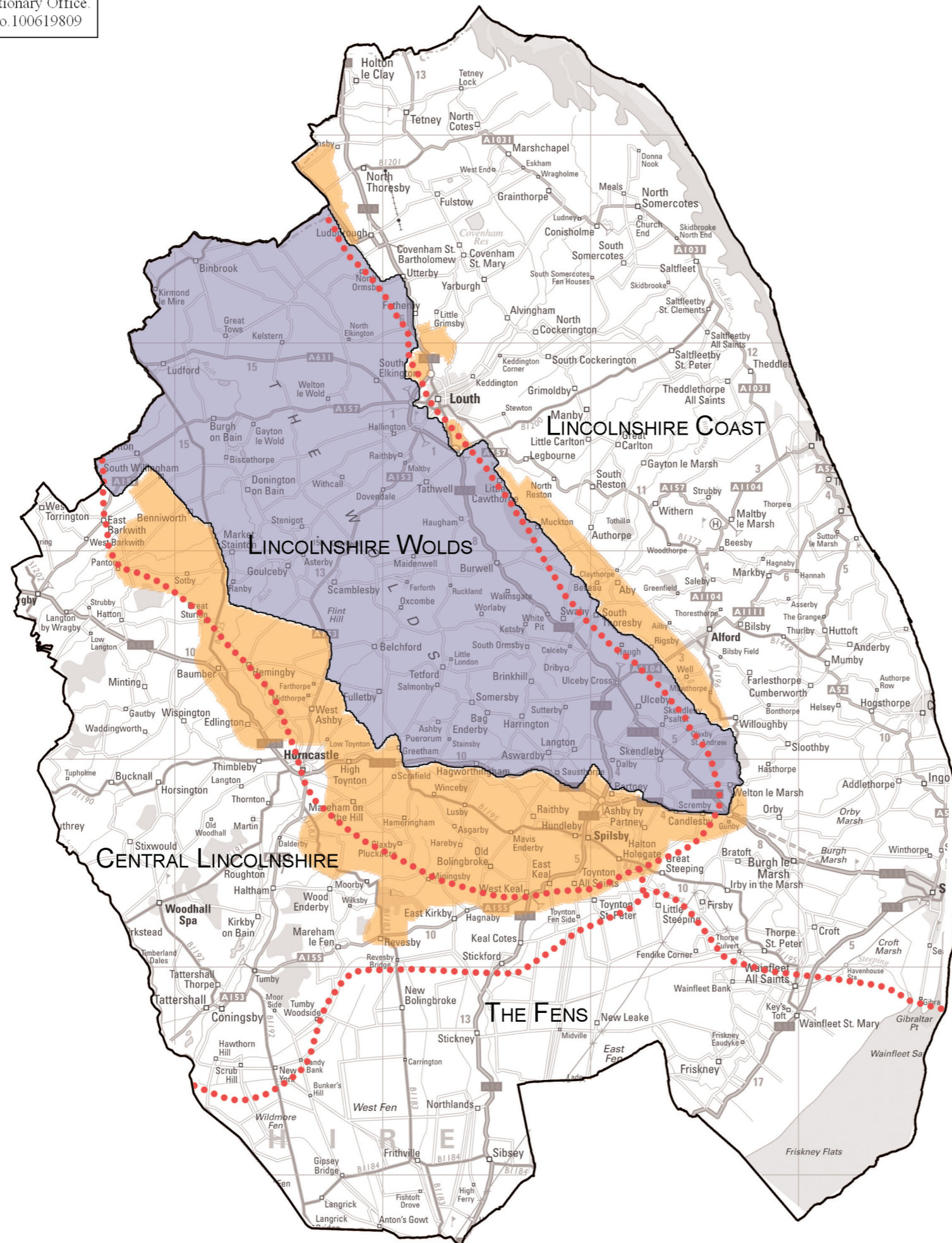
ECUS ref:
 MS/1846/03/revA

ECUS





ENVIRONMENTAL CONSULTANCY

Endcliffe Holt
 343 Fulwood Road
 Sheffield
 S10 3BQ
 Tel: 0114 266 9292
 Fax: 0114 266 8243
 www.ecusltd.co.uk

Reproduced from the original Ordnance Survey Map.
 With the permission of Her Majesty's Stationary Office.
 Crown Copyright. Licence no. 100619809



KEY

-  East Lindsey District Boundary
-  Area of Great Landscape Value (AGLV)
-  Area of Outstanding Natural Beauty (AONB)
-  Joint Character Areas (JCA) Boundaries

East Lindsey Landscape Character Assessment

Figure 4: Joint Character Areas & Landscape Designations
Source: East Lindsey District Council and Natural England

Scale 1:115 000 @ A3

6th Nov. 2008

ECUS ref:
MS/1846/04

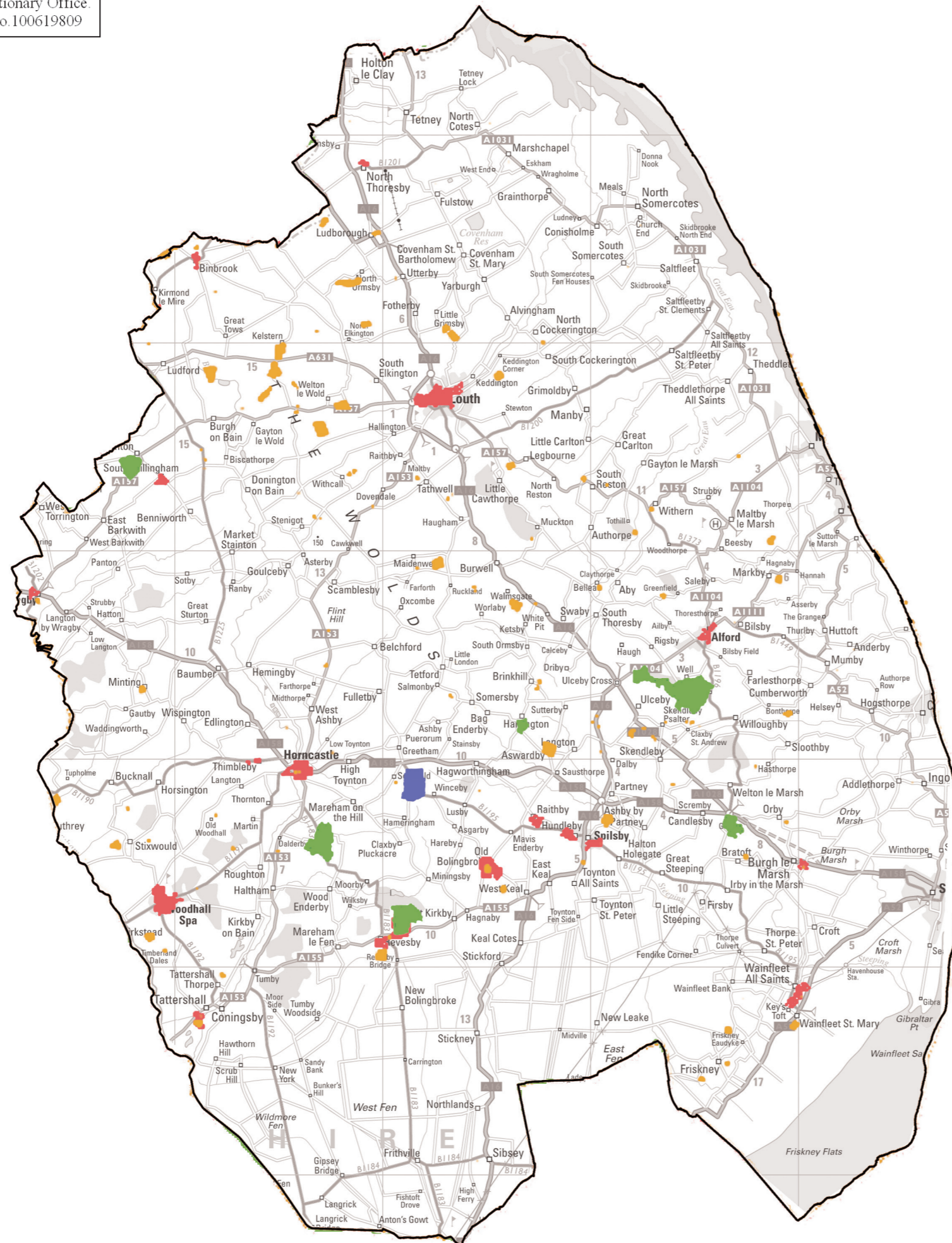
ECUS

ENVIRONMENTAL CONSULTANCY

Endcliffe Holt
 343 Fulwood Road
 Sheffield
 S10 3BQ
 Tel: 0114 266 9292
 Fax: 0114 266 8243
 www.ecusltd.co.uk



Reproduced from the original Ordnance Survey Map.
 With the permission of Her Majesty's Stationary Office.
 Crown Copyright. Licence no. 100619809



KEY

- East Lindsey District Boundary
- Conservation Area
- Scheduled Monument
- Historic Park and Garden
- Battlefield

East Lindsey Landscape Character Assessment

Figure 5: Cultural Designations
 Source: East Lindsey District Council

Scale 1:115 000 @ A3

24th March 2009	ECUS ref: MS/1846/05/rev A
-----------------	-------------------------------

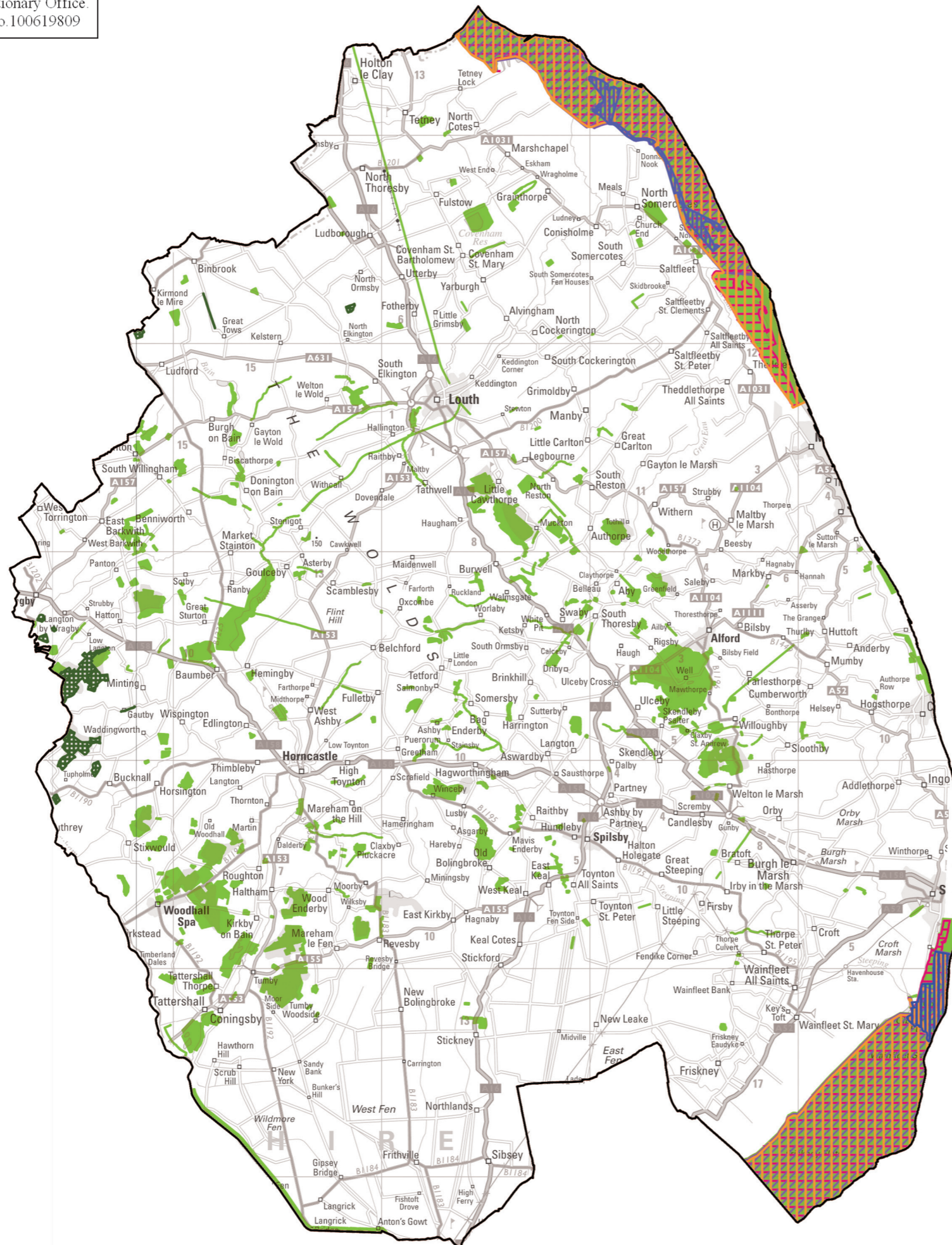


ENVIRONMENTAL CONSULTANCY








Endcliffe Holt
 343 Fulwood Road
 Sheffield
 S10 3BQ
 Tel: 0114 266 9292
 Fax: 0114 266 8243
 www.ecusltd.co.uk



Reproduced from the original Ordnance Survey Map.
 With the permission of Her Majesty's Stationary Office.
 Crown Copyright. Licence no. 100619809



KEY

-  East Lindsey District Boundary
-  Local Wildlife Site
-  National Nature Reserve (NNR)
-  Site of Nature Conservation Interest (SNCI) & Site of Special Scientific Interest (SSSI)
-  Special Area of Conservation (SAC)
-  Special Protection Area (SPA)
-  Ramsar Site

East Lindsey Landscape Character Assessment

Figure 6: Nature Designations
Source: East Lindsey District Council

Scale 1:115 000 @ A3

23rd March 2009

ECUS ref:
 MS/1846/06/rev A

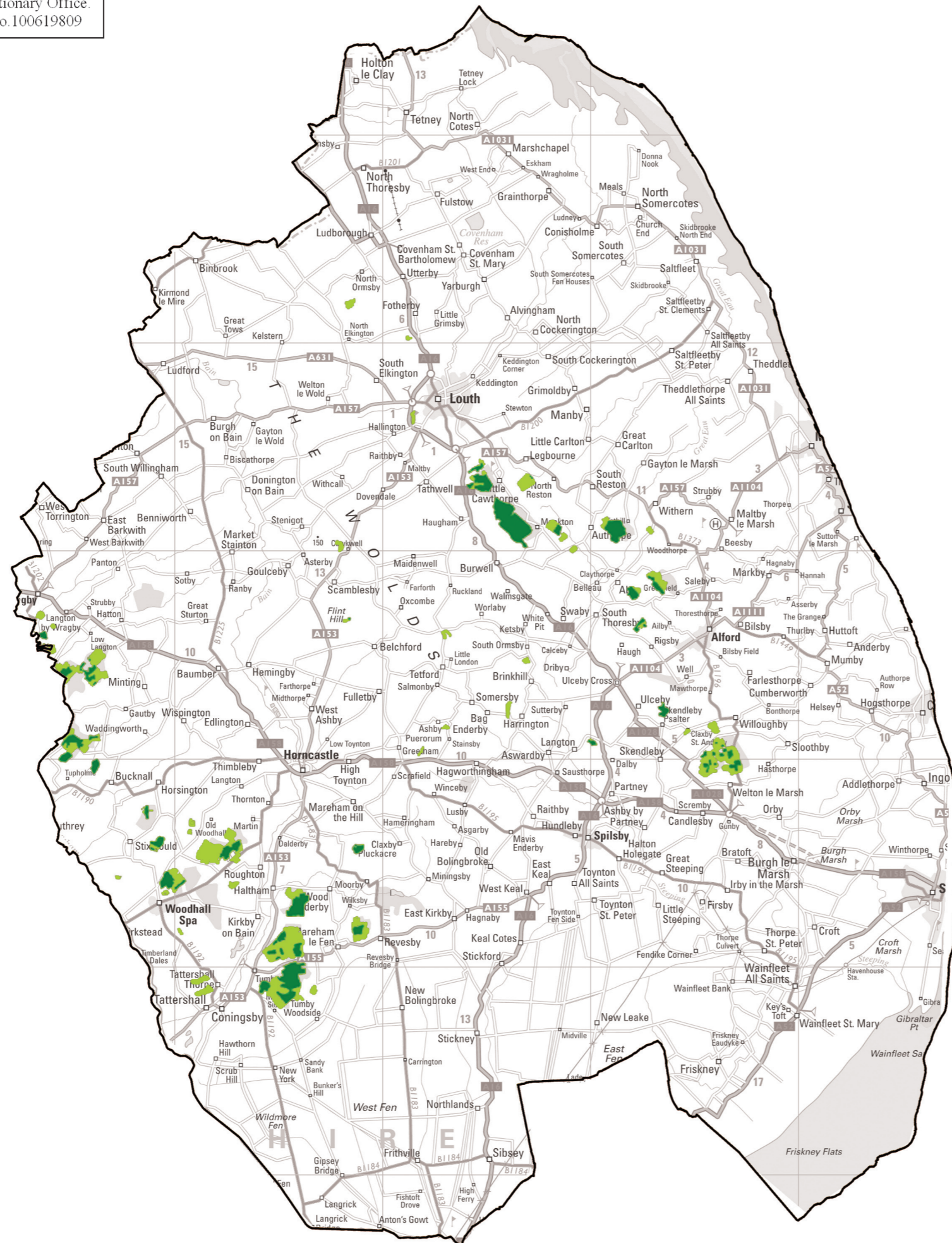


ENVIRONMENTAL CONSULTANCY




Endcliffe Holt
 343 Fulwood Road
 Sheffield
 S10 3BQ
 Tel: 0114 266 9292
 Fax: 0114 266 8243
 www.ecusltd.co.uk



Reproduced from the original Ordnance Survey Map.
 With the permission of Her Majesty's Stationary Office.
 Crown Copyright. Licence no. 100619809



KEY

-  East Lindsey District Boundary
-  Ancient Replanted Woodland
-  Ancient Semi-Natural Woodland

East Lindsey Landscape Character Assessment

Figure 7: Ancient Woodland
 Source: East Lindsey District Council

Scale 1:115 000 @ A3

6th Nov. 2008

ECUS ref:
 MS/1846/07

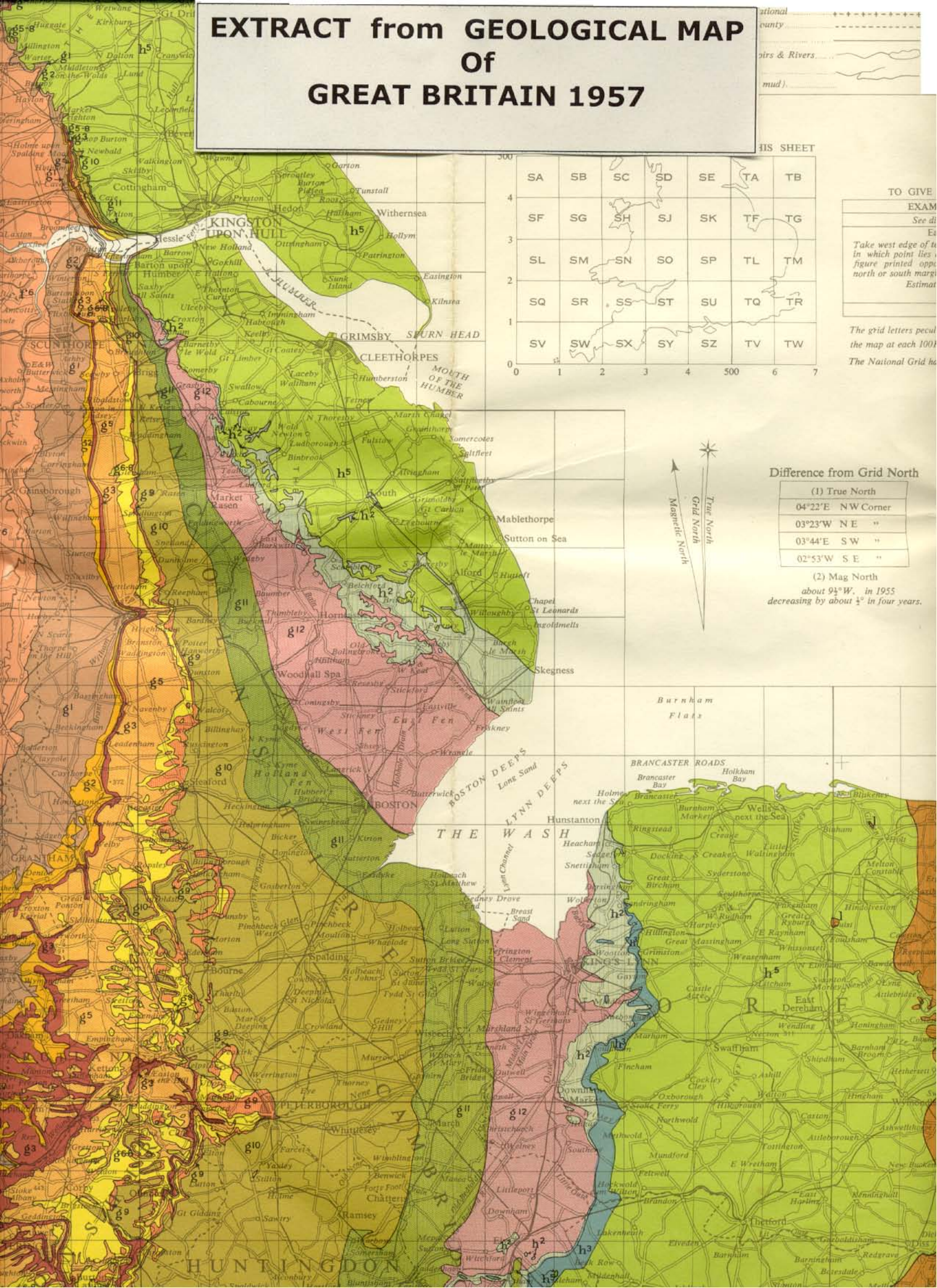


ENVIRONMENTAL CONSULTANCY

Endcliffe Holt
 343 Fulwood Road
 Sheffield
 S10 3BQ
 Tel: 0114 266 9292
 Fax: 0114 266 8243
 www.ecusltd.co.uk

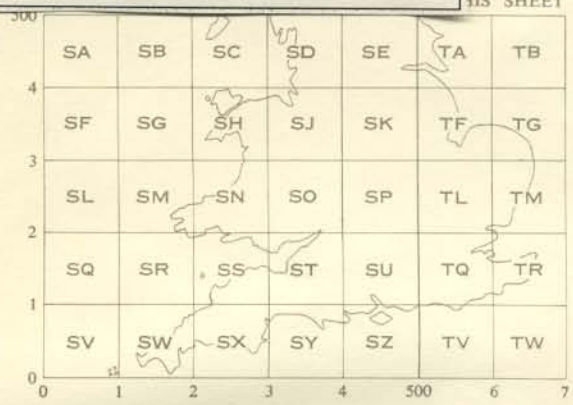


EXTRACT from GEOLOGICAL MAP Of GREAT BRITAIN 1957



ational county
 ounts
 ivers & Rivers
 mud)

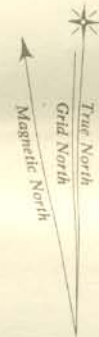
THIS SHEET



TO GIVE

EXAM
 See
 Es
 Take west edge of t
 in which point lies
 figure printed oppo
 north or south marg
 Estimat

The grid letters pecc
 the map at each 100
 The National Grid ha



Difference from Grid North

(1) True North
04°22'E NW Corner
03°23'W NE "
03°44'E S W "
02°53'W S E "

(2) Mag North
 about 93°W. in 1955
 decreasing by about 1/2° in four years.

HUNTINGDON

INDEX AND EXPLANATION

SEDIMENTARY FORMATIONS

(All superficial deposits omitted)

		QUATERNARY	
l	Norwich & Red Crag & Chillesford Clay	Pleistocene	
k¹	Coralline Crag		
k	Lenham & St. Erth Beds	Pliocene	
i⁸⁻¹²	Hamstead, Bembridge, Osborne & Headon Series, & Bovey Beds		
i⁴⁻⁷	Barton, Bracklesham & Bagshot Beds	Eocene	
i³	London Clay		
i¹⁻²	Oldhaven, Blackheath, Woolwich & Reading & Thanet Beds		
h⁵	Chalk (including Red Chalk)	Cretaceous	
h³⁻⁴	Upper Greensand & Gault		
h²	Lower Greensand & Speeton Clay		
h¹	Weald Clay		
h	Hastings Beds		
g¹⁴	Purbeck Beds	Jurassic	
g¹³	Portland Beds		
g¹²	Kimmeridge Clay		
g¹¹	Corallian		
g¹⁰	Oxford Clay with Kellaways Beds		
g⁹	Cornbrash		
g⁶⁻⁸	Great Oolite Series		
g⁵	Inferior Oolite Series		
g³⁻⁴	Upper Lias		
g²	Middle Lias (Marlstone)		
g¹	Lower Lias		
f⁶	Keuper Marl (with Rhaetic & Dolomitic Conglomerate)		Triassic
f⁴⁻⁵	Keuper Sandstone		
f¹⁻³	Bunter Sandstone, Pebble Beds & basal breccias		
e	Sandstones, marls and breccias	Permian	
e⁵	Upper Permian Marl		
e⁴	Magnesian Limestone (Upper)		
e³	Middle Permian Marl		
e²	Magnesian Limestone (Lower) & Basal Sands		
d⁶	Barren Upper Coal Measures & Pennant Series	Carboniferous	
d⁵	Productive Coal Measures		
d⁴	Millstone Grit & Culm Measures		
d²	Carboniferous Limestone Series		
	Basement Conglomerate		

MESOZOIC

TERTIARY

c ³	Upper Old Red Sandstone & Upper Devonian
c ²	Middle Devonian
c ²	Limestone
c ²	Middle Devonian & Brecon & Ditton Series
c ¹	Downton Series & Lower Devonian
c	Probably Devonian

Devonian

Limestones	
b ⁷	Ludlow
b ⁶	Wenlock
b ⁵	Tarannon & Llandovery

Silurian

b ³	Ashgill & Caradoc
b ²	Llandeilo (partly volcanic)
b ¹	Arenig

Ordovician

?a	Manx Slates & Dodman Series
----	-----------------------------

?

a ³	Upper Cambrian
a ¹⁻²	Middle & Lower Cambrian

Cambrian

X	Rocks of Anglesey, Charnwood, Longmynd & ?Ingletton
---	---

Pre-Cambrian

IGNEOUS ROCKS

Age, where known, indicated by formation letter, e.g.

Ge = Permian Granite

T	Tuffs, Ashes & Agglomerates
R	Rhyolitic & Trachytic Lavas
A	Andesitic Lavas
S	Spilitic Lavas
B	Basaltic Lavas

EXTRUSIVE

G	Granite & Granophyre
F	Syenite, Felsite, Porphyry
H	Diorite, Camptonite, Lamprophyre
D	Dolerite, Diabase, Greenstone & intrusive Basalt
E	Gabbro
U	Serpentine, Picrite

INTRUSIVE

Metamorphic

G	Gneiss, Mica Schist
E	Hornblende Schists

———— Major Thrusts

- - - - - Major Faults